

SLIDING DOOR HARDWARE

SLIDING DOOR HARDWARE

CAVITY SUITE

FEATURES:

- Flush Turn Design. Allows door to slide right back into cavity
- Standard 54mm hole template and instructions for fast and easy installation
- Every kit comes with a complimentary edge pull
- Stainless Steel Construction
- Finishes: SS, BLK

SQUARE STYLE



5330 | Passage Kit
5331 | Privacy Kit

ROUND STYLE



5326 | Passage Kit
5327 | Privacy Kit



ITALIAN RANGE CAVITY SLIDER

8107 Flush Pull Kit

Includes:

- 29mm Edge Pull
- 2x55x11mm Flush Pulls
- Finishes: BN, SC, SB, GN, BLK

8106 Privacy Kit

Includes:

- Turn+Escape, edge Pull, Privacy mortice lock, 55mm Baset
- Suits 34+ mm doors. Countersunk flush pulls allow doors to fully recess inside cavity.
- Finishes: BN, SC, SB, GN, BLK



FLUSH PULLS



5228
120 x 40mm
11mm depth
SS



5241
120 x 40mm
11mm depth
SS



5242
102 x 51mm
11mm depth
SS

FLUSH PULL KITS

- Kits include 2 x flush pulls and a matching edge pull



5261
Square Style
102 x 51mm
SS
Also available
as lock kits

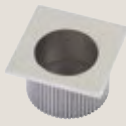


5260
Oval Style
102 x 120mm
SS
Also available
as lock kits

EDGE PULLS



5329
Round Style
29mm diameter
SS



5333
Square Style
29 x 29mm
SS



8088
Vica-Round Style
29 mm diameter
BN, SC, BLK, GN, SB



5259
Square Style
100 x 20mm
SS, BLK



5267
Oval Style
120 x 51mm
SS



5288
Concealed Fixing
90 x 18mm
SS, BLK, GN, SB



5289
Heavy Duty
157 x 20mm
SS

FLUSH RINGS

- Finishes: SC



5177 | 40 x 33mm
5154 | 50 x 37mm

SLIDING DOOR HARDWARE

VERVE FLUSH PULL RANGE



- 316 Marine Grade SS construction
- 37mm narrow profile to suit aluminium and timber sliding doors
- Concealed fixing — aesthetically pleasing
- Available with euro keyholes for external sliding doors
- Finishes: SB, GN, SS, BLK

* 5303	150mm length
5304	200mm length
* 5305	250mm length
5306	300mm length

* Only available in SS & BLK



VERVE FLUSH PULL KITS

- Includes 2 flush pulls and 5259 edge pull
- Finishes: SS, BLK, GN, SB

* 5319	150mm length
5320	200mm length
* 5321	250mm length
5322	300mm length

* Only available in SS & BLK

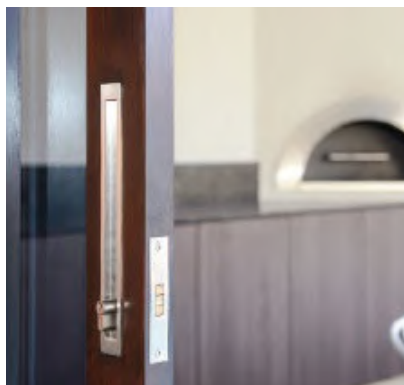


VERVE SLIDING DOOR LOCK KITS

- Includes 2 flush pulls with euro cutout, 5288 Edge Pull, 40mm cylinder & claw style mortice lock
- Finishes: SS, BLK, SB, GN

1269	200mm length
* 1270	250mm length
1271	300mm length

* Only available in SS & BLK



VERVE ELITE FLUSH PULLS

- Australia's longest flush pulls!
- 316 Marine Grade Stainless Steel Construction
- Concealed fixings—aesthetically pleasing
- Finishes: SS

5310.SS	520x55 mm
5311.SS	800x55 mm
5312.SS	1000x55 mm

